



# Brevard Public Schools Adult & Community Education

Lorri Benjamin  
Director  
[Benjamin.lorri@brevardschools.org](mailto:Benjamin.lorri@brevardschools.org)  
321-633-3660 ext.31401



@BrevardAdultEd

# Meet the team

**Karen D'arceuil**- Melbourne Administrator

**Jamie Cross**- Cocoa Administrator

**Julie Sanders**- Titusville Administrator

**Evelyn Padilla**- Communications & Engagement Coordinator

**KC Townsend**- Data Specialist

**Brad Bell**- GED Chief Examiner

**Tonya Holder**- Learning Specialist - Vocational Training Programs

**Travis Lowe**- Workforce Development Coordinator

**Kristen Nelson**- Testing Coordinator

**Shannon Franklin**- Learning Specialist- Academic Coach & Community Program Coordinator



## 3 CONVENIENT LOCATIONS IN BREVARD



### **Cocoa**

1225 Clearlake Rd.  
321-633-3660  
M-Th 7:30am-7:30pm  
Friday 7:30am-4pm



### **Melbourne**

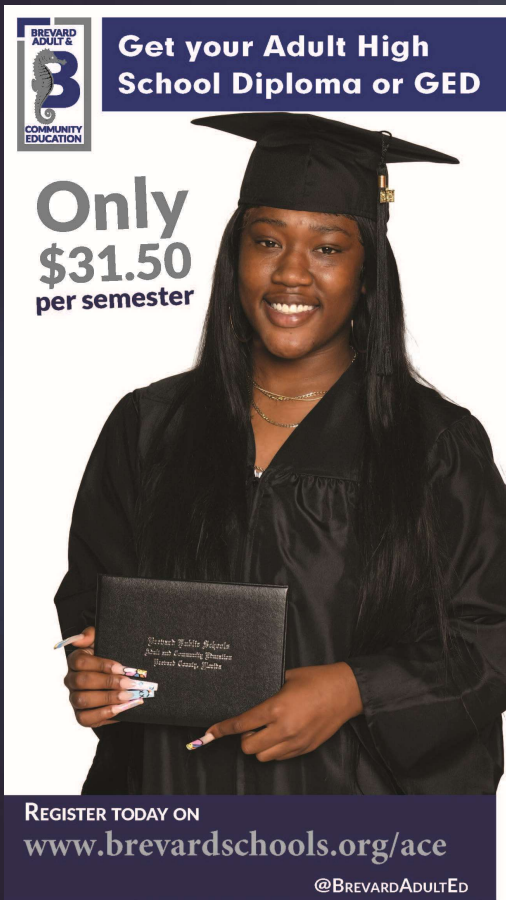
1362 S. Babcock St.  
321-952-5977  
M-Th 7:30am-7:30pm  
Friday 7:30am-4pm



### **Titusville**

1311 US-1, EFSC Bld. #6  
321-264-3088  
Mon-Fri 7:30am – 4pm

# GED & ADULT HIGH SCHOOL DIPLOMA PROGRAMS



**BREVARD ADULT & COMMUNITY EDUCATION**

**Get your Adult High School Diploma or GED**

**Only \$31.50 per semester**

**REGISTER TODAY ON**  
[www.brevardschools.org/ace](http://www.brevardschools.org/ace)  
**@BREVARDADULTED**

The advertisement features a smiling Black woman in a black graduation cap and gown, holding a black diploma folder. The folder has the text "Brevard Public Schools Adult and Community Education Brevard County, Florida" printed on it. The background is white, and the text is in a clean, sans-serif font.

- \$31.50 per semester
- Open enrollment year round
- Day, night and online options available
- Ages 16+
- Online application & registration

# ESOL PROGRAM- ENGLISH CLASSES



**Learn English as  
a Second Language**

**Only  
\$31.50  
per semester**



REGISTER TODAY ON  
[www.brevardschools.org/ace](http://www.brevardschools.org/ace)  
@BREVARDADULTEd

- \$31.50 per semester
- Open enrollment year round
- Day, night and online options available
- Courses cover:
  - ✓ improving language skills
  - ✓ learning about U.S. culture
  - ✓ preparing to become a U.S. citizen.
- Online application & registration



# VOCATIONAL TRAININGS



**Brevard Adult & Community Education**

**Brevard Adult Education Automotive Service Technology**

**2 year program**

- Classes held at Satellite High school
- Monday-Thursday 4:30-9 pm

ASE Certification Training in:

- Brake System
- Suspension & Steering
- Electrical/Electronic Systems
- Engine Repair

**Classes starting Fall 2022**

This program helps to prepare the student for employment in the automotive mechanics field. Students learn to diagnose malfunctions, repair, adjust or replace parts of the automobile, restoring it to the conditions and specification recommended by the manufacturer. These services range from basic automotive maintenance to the latest computer controlled units.

**For more information please call 321.633.3660 x31450 or visit [brevardschools.org/ace](http://brevardschools.org/ace)**

**Brevard Adult Education Pre-Apprenticeship Program in partnership with CareerSource Brevard**



**HVAC Electrical Pipe Fitting Plumbing Sheet Metal Line Erector**

**Coming soon**

Program is **FREE** of charge!  
9 month commitment required.  
Must complete application process.  
Spots are limited apply today!  
Visit [www.brevardschools.org/ace](http://www.brevardschools.org/ace)

**Candidates have the opportunity to obtain the following:**

- NCCER Core Curriculum Certificate
- Certified Production Technician (CPT) Certificate
- OSHA 10 Hour General Industry Certificate
- First Aid & CPR Certificate
- Opportunity to connect with a CSB career counselor
- Opportunity for paid work experience through CareerSource

Classes will be held at Clearlake Education Center  
1225 Clearlake Rd. Cocoa, FL 32922  
For more information call 321.633.3660 x31450  
or email [brevardadulted@brevardschools.org](mailto:brevardadulted@brevardschools.org)

**Brevard Adult Education Pre-Apprenticeship Program in partnership with CareerSource Brevard and Eastern Florida State College**



**SOLIDWORKS**

Classes start <b>August 15</b> Applications due <b>August 5</b>	Program is <b>FREE</b> of charge! Open to all over the age of 16. Must complete application process. <b>Spots are limited!</b>
--	---

**Candidates have the opportunity to obtain the following:**

- Certified SOLIDWORKS Associates (CSWA)
- Certified Production Technician (CPT) Certification
- Opportunity to connect with a CareerSource Brevard career counselor

**For more information**  
call 321.633.3660 x31450  
or email [brevardadulted@brevardschools.org](mailto:brevardadulted@brevardschools.org)  
Visit our website at [brevardschools.org/ACE](http://brevardschools.org/ACE)

Classes will be located at Brevard Adult Education  
Cocoa Campus, 1225 Clearlake Rd., Cocoa, FL 32922

# LIFELONG LEARNING



**Beginning Sign Language**



**Beginning Acrylic Painting Class**



**Microsoft Office**



**Photography**



**Basic Computers**



**Beginning Clay**



**Smartphone smart**



**Spanish 1-4 on Zoom**



**Para Pro Test Prep & testing**



**Dance for Beginners**



**Guitar for Beginners**

We are always looking for new classes to offer. If you are interested in teaching a lifelong learning class please let us know.

**If you would like to see other classes offered or you are willing to teach a lifelong learning class please contact 321-633-3660 x31462**

## INTEGRATED EDUCATION AND TRAINING (IET)



**IET** is a service approach that provides adult education and literacy activities concurrently and contextually with workforce preparation activities and workforce training for a specific occupation or occupational cluster for the purpose of educational and career advancement.



# INTEGRATED EDUCATION AND TRAINING PROGRAMS

## Current IET Programs

- Construction Pathway Pre-Apprenticeship Program IET Program – Evans Center
- Manufacturing (SOLIDWORKS) Pre-Apprenticeship IET Program – Cocoa
- Parapro (Instructional Assistant) IET Program - Cocoa

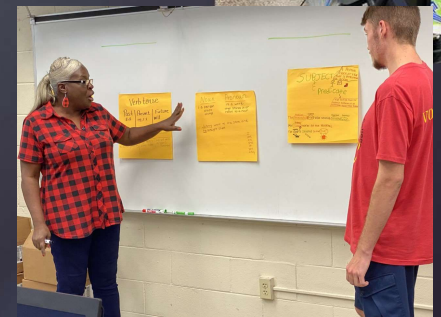
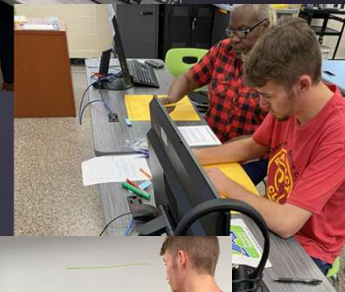
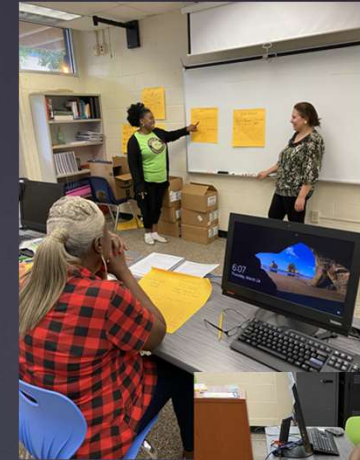
## Upcoming IET Programs

- Tech Boot Camp IET Program- Cocoa
- Salesforce IET Program-Melbourne

# PARAPRO IET- ONE INSTRUCTOR MODEL

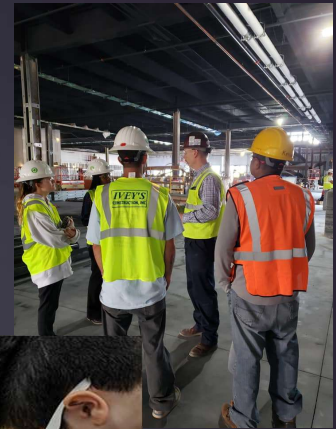
**Goal:** Provide training in the core skills necessary to score at or above the passing score on the ParaPro Assessment to become eligible to be hired as a paraprofessional.

- Instruction in reading, writing and math. (These are the 3 components of the ParaPro test).
- Participants will gain knowledge in best practices of being an instructional assistant.



# PRE-APPRENTICE CONSTRUCTION IET FULLY INTEGRATED/CO-TEACHING MODEL

- To provide applicants with 185 hours of occupational training skills instruction in the core skills needed for the construction industry and entry level manufacturing.
- To provide First Aid/CPR, OSHA 10 General Industry, NCCER core curriculum and MSSC Certified Production Technician training.
- To integrate literacy skills including English language acquisition training, workforce preparation and workforce training for student success in the construction career pathway.



# PRE-APPRENTICESHIP SOLIDWORKS IET PROGRAM

## FULLY INTEGRATED/CO-TEACHING MODEL

- To provide applicants with 160 hours of occupational training skills instruction in the core skills needed for CNC/DNC Machinists and entry-level manufacturing.
- To provide occupational skills training for students to be given an opportunity to earn a Solidworks certification and MSSC Certified Production Technician CPT certification.
- To integrate literacy skills including English language acquisition training, workforce preparation and workforce training for student success in the manufacturing career pathway.

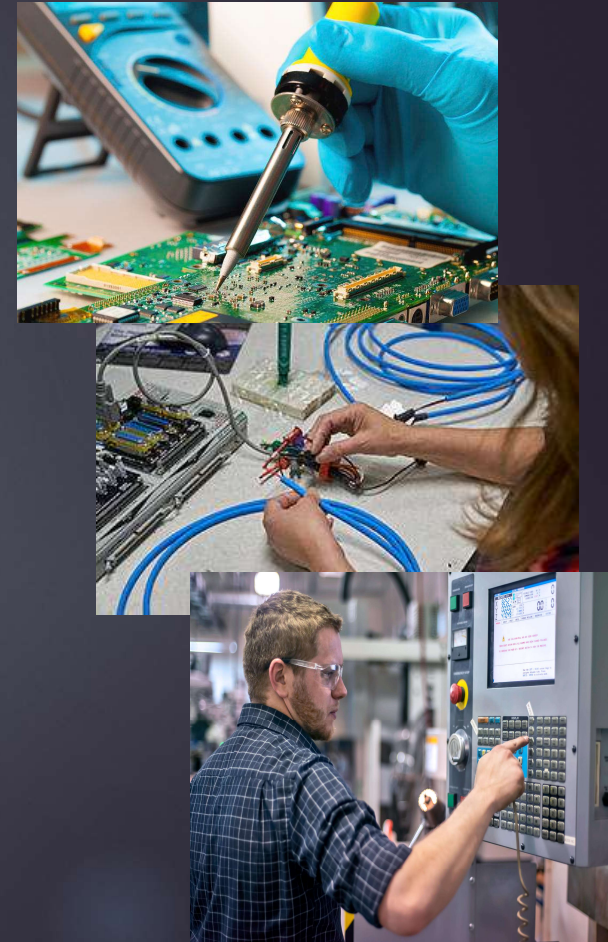




# TECH BOOT CAMP IET PROGRAM

## FULLY INTEGRATED/CO-TEACHING MODEL

- To provide applicants with 32 weeks of hands-on training in the core skills needed for the manufacturing industry.
- To provide occupational skills training to include applied manufacturing mechanics, through hole and surface mount soldering, non-destructive and destructive testing, and cabling and harness assembly.
- To provide intermediate training to help students transition from MSSC CPT training to an Engineering Technology A.S. Degree.
- To integrate literacy skills including English language acquisition training, workforce preparation and workforce training for student success in the manufacturing career pathway.



## SALES FORCE IET FULLY INTEGRATED CO-TEACHING MODEL



**Salesforce** is a customer relationship management (CRM) software platform using innovative applications focused on customer service, marketing automation, analytics, and application development.



**Brevard Adult &  
Community Education**  
Lifelong Learning

Starting  
at  
\$31.50

## **INSTRUCTIONAL ASSISTANT TRAINING & PARAPRO TEST PREP**

### **Parapro Test Prep Classes:**

Starting again Fall 2022

**Parapro Test:** Available daily, call  
to schedule your test today.



Included in the course will be instruction in reading, writing and math. These are the 3 components of the ParaPro test. Participants will gain knowledge in best practices of being an instructional assistant. \*This class is for those interested in working as an instructional assistant who do not have a 2-year degree.

**Call 321-633-3660 x 31456 to learn more  
or visit [www.brevardschools.org/ace](http://www.brevardschools.org/ace)**

## **Instructional Assistant Requirements**

We offer the Instructional Assistant Training and the Parapro Test Prep. Participants will gain knowledge in best practices of being an instructional assistant. This class is for those interested in working as an instructional assistant who do not have a 2-year degree.

- At least 60 Credit Hours of post secondary Education
- Passing score on the ParaPro Exam

\*\*\*We also offer the ParaPro Exam daily



# BACE Testing

01

## EOC's

- ✓ Utilize all three campuses to provide testing sessions for every available window.
- ✓ Provided both day and evening testing opportunities.
- ✓ Improved results and statistics.

02

## TABE/CASAS

- ✓ Increased availability and tests taken.
- ✓ Improved communication to students about testing.
- ✓ Improved results and statistics.

03

## PERT

- ✓ Available twice a year at all three campuses.
- ✓ Bootcamps available both face to face and e learning.

04

## What's Next

- ✓ Remote TABE and CASAS.
- ✓ On campus ACT testing.



# HIGH SCHOOL DIPLOMA DATA

Adult High School Graduates during the fall and spring terms  
excluding GEDs: 46

Adult High School Grad within 21-22 or later cohort: 26 or 54%

Adult High School Summer Boot Camp Grads: 2 both were in the  
21-22 cohort \*\*\*Still awaiting some FSA scores.



# CO-ENROLLEE HIGH SCHOOL RECOVERY LABS

## GUIDELINES HIGH SCHOOLS WILL COMMIT TO BE PART OF THE PROGRAM



- High Schools will follow the start and end dates provided by Adult Ed (Start date – anytime after September 13<sup>th</sup> to December 21<sup>st</sup>)
- Recovery labs must be run either before or after school hours
- High Schools must evaluate need & designate teachers with proper certification for classes offered
- Teacher of record will no longer be acceptable
- Big push for High School Graduates

## GUIDELINES HIGH SCHOOLS WILL COMMIT TO BE PART OF THE PROGRAM

- Paperwork for registration, payroll and grade reporting will be monitored with extreme fidelity
- No counselors to be paid out of co-enrollee funds
- Cannot send students to another campus
- Minimum of 8 students to have the program
- Can offer up to 6 hours a week
- Credit deficiencies are priority starting with seniors

# With our ESSER funds we will be able to remove the following barriers

- ▶ **Childcare** near all 3 campuses through Step by Step Early Learning and Just for Kids.
- ▶ **Bus Passes** for transportation
- ▶ Provide **Mental Health Services** through in person/virtual on campus/virtual at home sessions with Coastal Psychiatric Urgent Care and Bella Mental Health Services



# Stay connected

- ▶ Feel free to reach out to [benjamin.lorri@brevardschools.org](mailto:benjamin.lorri@brevardschools.org) or ext. 31401
- ▶ Cocoa Campus [cross.jamie@brevardschools.org](mailto:cross.jamie@brevardschools.org)
- ▶ Titusville Campus [sanders.julie@brevardschools.org](mailto:sanders.julie@brevardschools.org)
- ▶ Melbourne Campus [darceuil.karen@brevardschools.org](mailto:darceuil.karen@brevardschools.org)
- ▶ Centers will be reaching out in the next couple of weeks for appointments



Visit our website for more information  
[www.brevardschools.org/ACE](http://www.brevardschools.org/ACE)

Follow us on Social Media



@BrevardAdultEd